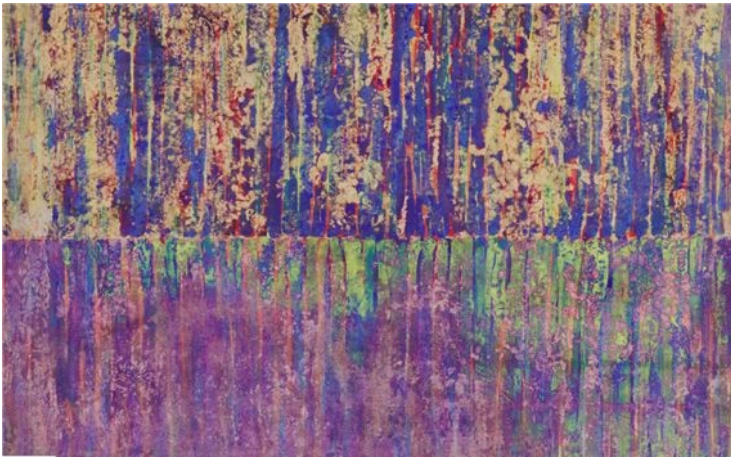


Modern and Contemporary Art of the Arab World

Christie's London

 ST. JAMES'S | LONDON | UK

JUL 20, 2023 - AUG 23, 2023



Visit Christie's in London this summer for an exciting exhibition series celebrating Modern and Contemporary Art of the Arab World. Organised in partnership with the United Arab Emirates Ministry of Culture and Youth, and the Barjeel Art Foundation, Modern and Contemporary Art of the Arab World is the largest exhibition of the art of the region in London to date, presenting highlights from the Barjeel Art Foundation, a collection of works by the pioneering Emirati artist Hassan Sharif and a group of works by contemporary Emirati artists. An unmissable event for this season's arts and culture calendar with works spanning over 80 years of creativity from 1939 to 2023, the exhibitions are open to the public from 20 July to 23 August with free entry in the heart of London's historic St James's district.

The Kawkaba: Highlights from the Barjeel Art Foundation exhibition is an homage to the rich artistic diversity and dynamism of West Asia and North Africa. Assembled from geographies within the Arab world, Kawkaba or 'Constellation', resonates with a myriad of artists and creators—some celebrated, others underrepresented. Drawn from the collection of the Barjeel Art Foundation dedicated to the art of the Arab world, every work in the exhibition is a testament to the talent and ingenuity of artists of the region, reflecting their unique visions and the profoundly ingrained essences of their cultures. Kawkaba is as a gender-balanced exhibition and presents masterpieces of leading figures of the field, such as Huguette Caland, Ibrahim El-Salahi, Etel Adnan, Marwan, Safia Farhat, Jewad Selim, Inji Efflatoun and Mohammed Melehi. It concurrently sheds light on underrepresented artists—based in the region, from the diaspora, or exiled—who have highly contributed to modern Arab art and reflected on the heterogeneity and diversity of the art narratives. Through this exhibition, visitors are invited to traverse the artistic spirit of the Arab world and partake in its unrivalled transformative journey.

Emirati Art Reimagined: Hassan Sharif and the Contemporary Voices explores the career of the leading figure of conceptual art in the Emirates and the Arabian Gulf, and reveals the profound impact of Hassan Sharif's legacy. The exhibition includes one of the largest private collections of Hassan Sharif's work spanning his time working in London in the 1980s to his death in 2015. Works from this collection are available for immediate purchase via Private Sales, with highlights including Cloth 2, Sand Dollar No. 7, Wedding A, and Four Shapes. Alongside this rare group of creations are artworks by contemporary Emirati artists on loan from the Ministry of Culture and Youth, United Arab Emirates. The exhibition presents the works of Mohammed Kazem, Mohamed Ahmed Ibrahim, Hussain Sharif, Farah Al Qasimi, Alaa Edris, Zuhour Al Sayegh and Taqwa Al Naqbi, whose voices challenge artistic norms and shape the creative landscape of the United Arab Emirates

Artists on show

Alaa Edris

Farah Al Qasimi

Huguette Caland

Etel Adnan

Hassan Sharif

Hussein Shariffe

Please note that this site uses cookies. For more information, see our [Cookie Policy](#).

×

Jewad Selim

Mohamed Ahmed Ibrahim

Mohammed Melehi

Taqwa Al Naqbi

Marwan

Mohammed Kazem

Safia Farhat

Zuhoor Al Sayegh

Contact details

Website

+44.20.7839.9060

8 King Street St. James's -
London, UK SW1Y 6QT

[VIEW ON MAP](#)

Related articles

Sultan Sooud Al Qassemi of the Barjeel Art Foundation: 'My aim is to have Arab art taught on a par with other art histories' [↗](#)

AUGUST 3, 2023

As Christie's hosts London's largest exhibition of modern and contemporary Arab art, we speak to the founder of the UAE-based Barjeel Art Foundation, whose unique collection is finding new audiences for Middle Eastern artists past and present.



What's on nearby

Please note that this site uses cookies. For more information, see our [Cookie Policy](#).